



KABA ANNUAL REPORT

FIVE YEAR
PLAN:
2013-2017...



6,974+
jobs



\$1.1 B
in capital
investment



\$15.8 MM
in new project
financing



435
companies visited
through BRE
Program



DEAR INVESTORS, PARTNERS, & STAKEHOLDERS

On behalf of the Board of Directors and staff, I am pleased to share the 2017 Annual Report for the Kenosha Area Business Alliance (KABA).

2017 was another strong year for economic development in the Kenosha Area. It also marked the end of KABA's current 5-year scorecard period. During this time (2013-2017), KABA has supported economic development projects that have generated more than \$1.1 billion in new investment and added nearly 7,000 jobs to Kenosha County payrolls.

The most significant win of the past year was the announcement that Haribo will build its first North American production facility in Pleasant Prairie. The size and scale of this project are impressive and KABA and its partners worked closely with Haribo officials to put this deal together. Ultimately, it led to the Village of Pleasant Prairie's acquisition of a nearly 500-acre development site which will accommodate Haribo's campus and provide an incredibly high profile location option for other large-scale developments.

There were numerous additional development wins throughout the community and region. The rapid expansion of ULINE's Kenosha County footprint continued with multiple new facilities coming online in 2017. Also, international electronics manufacturer Foxconn announced plans for a massive manufacturing complex in Racine County, just across the Kenosha County line. Reported as a \$10 billion project that may eventually generate 13,000 jobs, this is potentially one of the largest economic development projects in U.S. history. As the community, region and state work to comprehend the potential impacts, area companies are looking to understand potential business opportunities that may emerge, while also preparing for a more intense competition for talent.

KABA continues to invest considerable time, energy, and resources toward working with area employers and education and workforce development partners to support initiatives that strengthen and grow Kenosha County's talent pipeline. Talent development, retention, and recruitment are all part of the mix. Our initial efforts here have shown promise, but we need to find ways to accelerate and scale these initiatives.

While concerns about the depth and breadth of the labor force are front and center, there should be tremendous optimism about the strength of the economy, the major developments that are coming to our community and region, and the opportunities that are being created for our communities, people and companies.

Thank you for your continued support, investment, and involvement.

Best wishes for a prosperous 2018,

Todd Battle, President

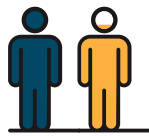


ECONOMY.

Kenosha County had a very successful 2017 in terms of economic development. Two of Wisconsin's largest economic development projects in 2017 - Haribo and Gold Standard Baking - were in Kenosha County.

The KABA Scorecard is a set of primary performance indicators to track the overall performance of KABA and the Kenosha Area in regards to economic development. It serves as a visual representation of its long range goals.

2017 SCORECARD



842
jobs
2017 GOAL:
1,000



\$326.5 MM
new private
investment
2017 GOAL:
\$100 MM



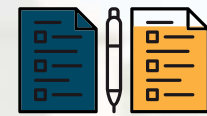
57
leads
2017 GOAL:
50



16,000
2017 GOAL:
20,000



\$2.3 MM
2017 GOAL:
\$3 MM



84
2017 GOAL:
100

HARIBO

Jobs: **400** | Capital Investment: **\$242 million** | Project: **500,000 SF** advanced manufacturing facility



German confectioner Haribo selected Prairie Highlands Corporate Park in the Village of Pleasant Prairie as the site of its first North American manufacturing plant.

When complete, Haribo's new facility will be one of the largest confectionery production facilities in the nation.

OTHER EXPANSIONS/RELOCATIONS INTO KENOSHA COUNTY

Company	Project	Jobs	Investment
Gold Standard Baking	200,000 SF building	96	\$42 million
Prestige Metal Products	85,630 SF building	46	\$2.5 million
Edible Cuts	70,000 SF building	200+	\$8 million

ECONOMY.

At its core, KABA fosters economic development by helping companies that are in Kenosha County innovate, expand and thrive; and by assisting companies that want to make a move to or within Kenosha County. While everything KABA does could be considered economic development, working directly with companies in all aspects of their growth is highest on that list.

ULINE

Jobs: **975** | Capital Investment: **\$150+ MM** | Project: **250,000 SF** HQ campus; **1MM SF** distribution facility; & **800,000 SF** distribution; **80,000 SF** office

In 2017, Uline completed a massive expansion project which doubled the size of their corporate campus in Pleasant Prairie. They also relocated their entire Midwest Distribution Center Operations from IL to Kenosha.

KABA tracks developments throughout Kenosha County. Below is a listing of the larger expansion projects that were announced, in progress or completed in 2017 [Note: KABA did not assist with all of the projects listed]:

Company	Project	Jobs	Investment
Froedtert South	194,000 SF building	100	n/a
Five Star Fabricating	110,000 SF building	25	\$13 million
Commercial Plastics	67,000 SF building	100	\$9 million
Olds Products	126,000 SF building	25	\$7 million
FNA Group	45,000 SF building	40	\$2 million
Children's Hospital	30,000 SF building	46	\$1.4 million
Kroger Commissary	new equipment	10	\$19.2 million
Fairfield Inn & Suites	108-room hotel	18	n/a



KABA REVOLVING LOAN FUND (RLF) PROGRAM

KABA has helped hundreds of companies to relocate or expand in Kenosha County through its \$30+ million portfolio of community revolving loan funds. These funds are used to provide low-cost financing to companies creating jobs in Kenosha County by expanding or establishing a new facility in the area.

Company: **Endurance RE (Frontida, Inc)**
 Project: Acquisition of professional office building in Downtown Kenosha for HQs
 Total project investment: \$275,000
 KABA loan amount: **\$110,000**
 No. of jobs created/retained: 8

Company: **Gorman Heritage House**
 Project: Rehabilitation of Heritage House in Downtown Kenosha
 Total project investment: \$25,000,000
 KABA loan amount: **\$1,250,000**
 No. of jobs created/retained: 80

Company: **Doheny Enterprises**
 Project: Construction of new 200,000 SF facility
 Total project investment: \$15,000,000
 KABA loan amount: **\$1,040,000**
 No. of jobs created/retained: 150

KABA's loans in 2017 supported:

\$2.4 MM
gap financing

238
jobs

\$40.3 MM
total capital investment

273,785 SF
new development/
redevelopment

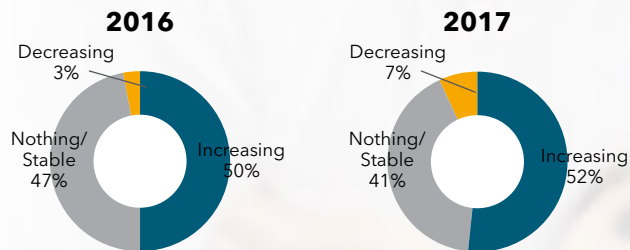
ECONOMY.

Every year, KABA takes the pulse of Kenosha County companies through its Business Retention & Expansion (BRE) Program. Employers provide KABA with valuable information about the health of the county's economy and identify opportunities and challenges to help KABA focus its development efforts. In 2017, KABA staff conducted formal interviews with 84 companies.

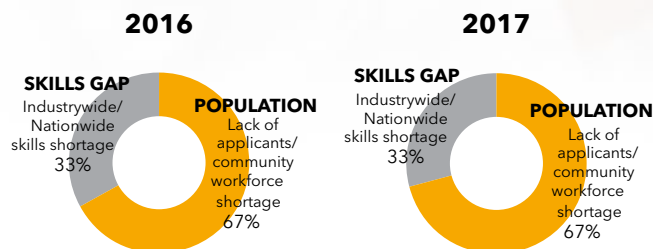
BRE: RECRUITMENT

KABA asked executives if they thought there is a nation-wide shortage of particular skills needed or if the shortage just exists in our community. Most executives thought that both were true, but that the need for our community to grow to meet the demand for open positions is currently the most important issue.

How are your hiring needs?

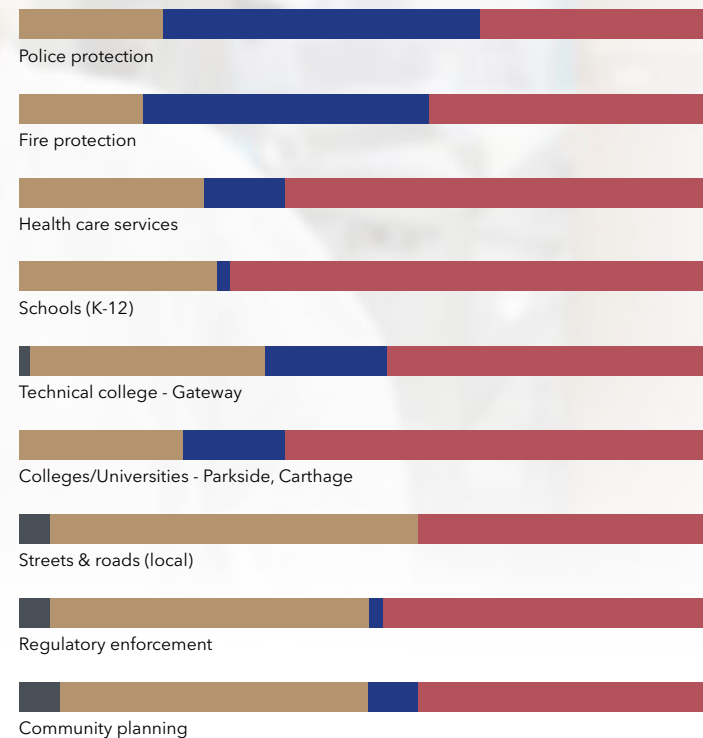


What is your recruitment issue(s)?



BRE: COMMUNITY SERVICES - HOW ARE WE DOING?

Company executives reported overall a high level of satisfaction with community services. Most executives listed education and infrastructure as the most important issues: schools (K-12), technical education/colleges, public safety and the current condition of our roads/streets - including better access to downtown.



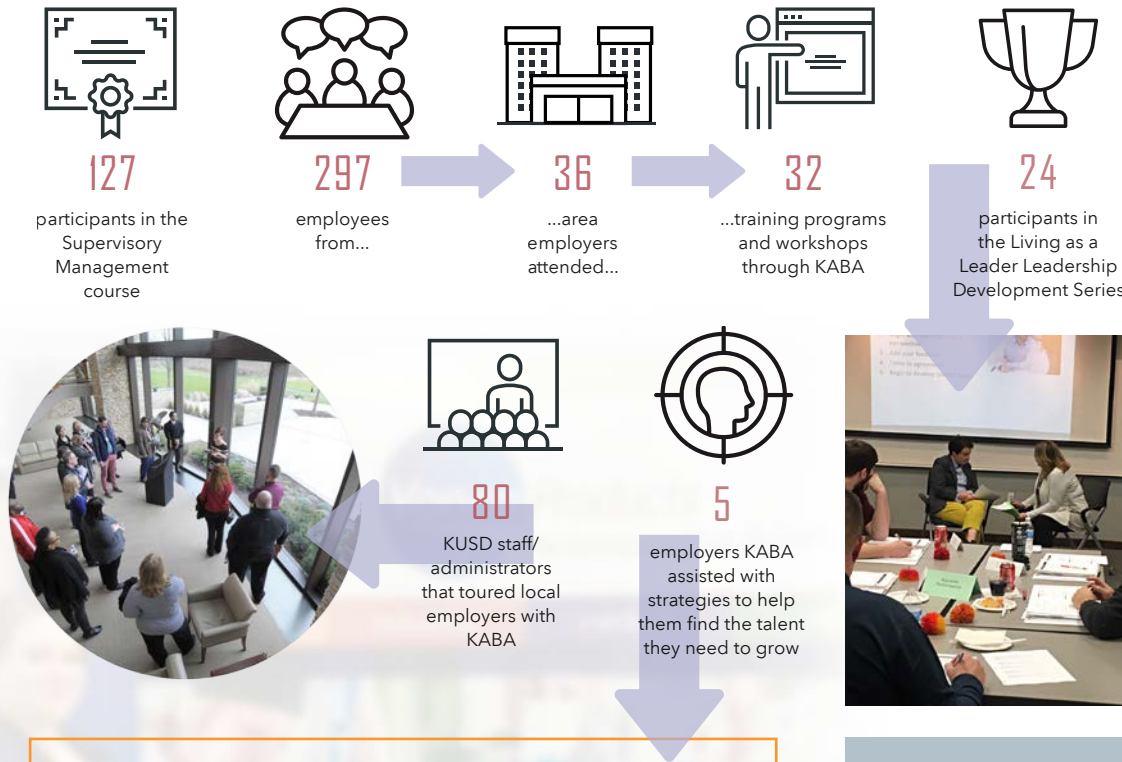
Executives rated their satisfaction as:

- Not very satisfied
- Satisfied
- Very satisfied
- Neutral

TALENT.

People are at the heart and soul of any business or community. Attracting, retaining and engaging with people to live, work and find success in Kenosha County is an ideal to which KABA is strongly committed.

In 2017, KABA worked with its partners and area employers to launch, advance and promote talent initiatives. Below is a snap-shot of some of those efforts. To learn more, visit kaba.org/initiatives.



INSPIRE SOUTHEAST WISCONSIN

Inspire Southeast Wisconsin is a powerful web-based platform that provides a central hub where area students (grade 6-12) and educators - including those in Kenosha Unified School District - can interact with local employers and career coaches to explore a variety of industries, employers and career-based learning experiences (CBLE) in our region. Participation is free and open to any industry or sector.



Within the seven-county Southeast Wisconsin region:

327 employers have active company profiles

69,000 CBLEs between business & K-12

Learn more: kaba.org/inspiresewi

CASE STUDY: VONCO PRODUCTS

To assist Vonco Products with hiring demands at their new facility in the Salem Business Park, KABA developed and executed a hiring blitz and community open house.

The hiring event was held at the Salem Lakes Town Hall in two sessions with the following results:

60 candidates were interviewed

30 were hired full-time

TALENT STRATEGIES

In 2018, KABA will continue to implement best practices and strategies to improve our approach to workforce development, with particular emphasis on:

- 1 **Helping employers be more effective and aggressive with outreach.**
- 2 **Aligning employers/educators/community around promoting a career-going culture for students in K-12 and higher education.**
- 3 **Showcasing and sharing best practices on developing and promoting 'total package' (company & community) when recruiting.**



TALENT.

Through the Kenosha Area Business Alliance Foundation, Inc., KABA plays an active role in the Kenosha area's education system with a mission to increase graduation and educational attainment rates, improve the overall quality of education and foster the best school system in the state. Initiatives include an elementary school mentoring program, annual scholarship awards, and support for various other educational initiatives.

THE GATEWAY PROMISE

KABA is proud to support the Gateway Promise, which ensures Kenosha County, Racine County and Walworth County high school graduates, who meet program eligibility requirements, can attend Gateway Technical College tuition-free. This unique program will help area high school students realize their dream of attending college and begin their path to career and personal success.

150

high school graduates participating in the first group of Gateway Promise program students



BUILDING OUR FUTURE KENOSHA COUNTY

Our schools can't do it alone, which is why KABA strongly supports Building Our Future Kenosha County (BOF).

In 2018, BOF hired a director of operations and research and evaluations manager and established permanent space at the United Way offices. They are working with their partners in five identified outcome areas: community engagement, smart beginnings, school success, high school graduation, and post-secondary education and career preparation.

Learn more at buildingourfuturekc.org



125

mentors participating in the KABA Mentor Program served...



146

...students from Kenosha Unified and other school districts throughout the County



\$18,802

in scholarships awarded to Kenosha County graduates through the CatalystToCareers program



\$50,000

donated by the foundation to other education-related initiatives in Kenosha County

Learn more:
kaba.org/about/kaba-foundation

Today's students are tomorrow's workforce!



TALENT.

KABA is excited and optimistic about the future of Kenosha County. Through its programming and initiatives, KABA strives to bring the community together and keep the conversation going about the direction Kenosha County is headed. There is much to be celebrated and room for improvement - and always a need to coordinate our efforts and stay informed and empowered to lead.

INSPIRE

Inspire is a series of activities, events and resources designed to empower existing and emerging leaders to create change in our community. As part of this platform, KABA hosts a one-day leadership experience to challenge and inspire attendees to walk away with ideas on how they can be a better leader in their careers, communities, and personal lives. The 2017 event featured exciting national and regional leaders including best-selling author Jon Gordon and Jockey spokesmodel Chris Van Etten (pictured left).



"It lived up to its name... I left feeling inspired!!" - Ann, Uline
"I loved the energy and enthusiasm in the room and the genuinely world class line-up." - Mary, Jockey International

450

attendees

5

speakers

10

corporate sponsors

Inspire 2018 will be held October 12, 2018.

Learn more: kaba.org/about/inspire

EVENTS/PROGRAMMING

KABA hosts various events throughout the year to inform and engage its investors and the business community about topics central to moving Kenosha County forward. Events include groundbreakings, workshops and industry roundtables, training, awards receptions, candidate forums, young professional programming, social events, and more.



55+

events/
programming
hosted by KABA in
2017



KABA.ORG

KABA launched a redesigned website - kaba.org. The new site's theme is 'Perfectly Centered' and talks about how Kenosha County is an area thriving with possibility. It features rich content about doing business here as well as a new event calendar, blog, and social media feeds.



More than 380 people attended the 2017 Ovation Awards celebrating business excellence in Kenosha County. The following award winners were honored at the event:

Business of the Year: **KENALL MANUFACTURING**

Small Business of the Year: **KENOSHA KINGFISH BASEBALL CLUB**

Entrepreneur of the Year: **S. R. MILLS, BEAR REAL ESTATE GROUP**

Fast Five: **FRONTIDA ASSISTED LIVING, INC.**
OTTO NELSON MOVING & STORAGE
PURATOS CORPORATION
SL MONTEVIDEO TECHNOLOGY, INC
VONCO PRODUCTS, LLC

OVATION AWARDS

PLACE.

Place is important. People are increasingly choosing a place to live before choosing a place to work. As companies jockey for employees, having a vibrant, healthy community to attract and retain talent is paramount. KABA strongly and actively supports the efforts of ongoing community initiatives that promote and improve Kenosha County as a great place to live, work and play.

YLINK: YOUNG LEADERS IN KENOSHA



200

YPs attended one of the six events during YPWeek Kenosha



22

events/programs hosted for YPs



25

dynamic YPs serve on the YLink Leadership Team



14

YPs graduated from the Nonprofit Board Prep Program

Learn more: ylinkenosha.org

YLink is Kenosha County's young professional organization and is administered by KABA. YLink acts as the catalyst to connect, attract, retain and foster relationships, professional growth and community-mindedness among young professionals in the Kenosha Area.

FUTURE 5 AWARDS

Future 5 honors five individuals who live or work in the Kenosha area, and who are positively influencing quality of life in our community through professional accomplishments, community involvement, civic engagement, leadership and inspiring vision for Kenosha's future.



The 2017 Future 5 Winners:

- > **John Hogan**, Dooley & Associates
- > **Megan Wells**, MG
- > **Brandi Cummings**, Kenosha Public Library
- > **Sharmain Harris**, Racine Kenosha Community Action Agency
- > **Laura Tyunaitis**, Kenosha Area Convention & Visitor's Bureau

NONPROFIT BOARD PREP PROGRAM

This YLink program trains YPs interested in serving on local non-profit boards. Participants learn about nonprofit structure, strategic planning, financial management, legal & ethical responsibilities and fundraising. A social was held at the end of the 2017 session and printed "lookbooks" were created to connect grads with local nonprofit leaders.

DOWNTOWN KENOSHA, INC. (DKI)

In 2017, DKI Executive Director Nicole Thomsen was a fresh and energetic force for the organization. Several exciting developments were announced and are taking shape including the redevelopments of the historic Heritage House into the Stella boutique hotel and the former Kenosha Youth Foundation into the Residences at Library Park. The Kenosha Creative Space opened its doors as well as The O at Backyard Dream Studios coworking space and the Lofts 2. In all, 26 businesses launched in downtown Kenosha. KABA believes Downtown Kenosha is poised for great things in 2018 and beyond.

Learn more at downtownkenosha.org



LEADERSHIP

STAFF

Todd Battle, President

Lisa Feltson, Office Manager

Brooke Infusino,
Director of Talent Development

Jeanne Geiger,
Administrative Assistant

Becky Noble, Director of Marketing

Brock Portilia,
Director of Finance & Administration

Heather Wessling Grosz,
Vice President of Economic
Development

COMMITTEES

Audit

David Geertsens
Kathleen Goessl
Cherie Julius
Karla Krehbiel*
Ken Konjura
David Nankin
Karl Ostby

Executive

Anne Arbas
Susan Crane
Timothy Geraghty
Randy Hernandez
Jerry King
Karla Krehbiel
Aldo Pagliari
Brenda Penesis

Peter Sinsky
Charles Skendziel
Frank Unick
Susan Ventura*
Timothy Woods

Finance

Sue Block
Andrea Bukacek
Jens Emerson*
Nate Franke
Paul Krumrie
Wesley Ricchio
Sara Verbsky
Kyle Vitkus
Andy Vogel

Nominating

Michael Gardner
David Geertsens
Randy Hernandez
Mark Jaeger
Karla Krehbiel
Frank Unick
Susan Ventura*
Chris Weyker

Personnel

Karla Krehbiel
Frank Unick
Susan Ventura*

* denotes Chair



Chair
Susan Ventura
Executive Vice
President,
Froedtert South



Vice Chair
Karla Krehbiel
Regional
President,
Johnson Bank



Secretary
Susan Crane
Owner,
Crane Farms



Treasurer
Peter Sinsky
CFO, Riley
Construction
Company, Inc.

BOARD OF DIRECTORS

Dr. Bryan Albrecht
President, Gateway Technical
College

Anne Arbas
Senior Vice President & CFO,
Jockey International, Inc.

Randy Barfield
Vice President for Business,
CFO, Carthage College

Randy Ekern
Vice President Global
Operations & Supply Chain,
InSinkErator

Dr. Deborah Ford
Chancellor, University of
Wisconsin-Parkside

Michael Gardner
General Manager - Electric
Systems, SL Montevideo
Technology, Inc.

Timothy Geraghty
Attorney, Godin Geraghty
Puntillo Camilli, SC

Randy Hernandez
Executive Vice President,
Operations,
Kenall Manufacturing

Jamie Hogan
President, Specialized
Accounting Services LLC

Chet Keizer
President, IRIS USA, Inc.

Jerry King
CFO, Kenosha Beef
International, Ltd.

Chad Navis
Director of Industrial
Investments, Zilber Property
Group

Aldo Pagliari
Senior Vice President -
Finance & CFO,
Snap-on Incorporated

Brenda Penesis
Plant Manager, ACCO Brands

Kurt Penn
CEO, Good Foods Group, LLC

Randall Rickman
Publisher, Kenosha News

Dr. Sue Savaglio-Jarvis
Superintendent of Schools,
Kenosha Unified School District

Paul Schrock
Plant Director,
Niagara Bottling, LLC

Corey Schultz
Vice President of
Sales & Marketing,
Five Star Fabricating, Inc.

James Sherman
Director, Wholesale &
Customer Solutions,
WEC Energy Group

Charles Skendziel
Owner, Equity Creative

Mike Stone
General Manager, Amazon

Frank Unick
CFO, Uline, Inc.

Chris Weyker
CEO, Kenosha Achievement
Center, Inc.

Timothy Woods
Director - Manufacturing
& Operations, North America,
SC Johnson & Son, Inc.

FINANCIAL INFORMATION

Kenosha Area Business Alliance, Inc. and Its Subsidiaries
 Unaudited Consolidated Statement of Financial Position Compiled for the Years Ending 2016 & 2017

KENOSHA COUNTY HIGH IMPACT FUND

The Kenosha County High Impact Fund, administered by KABA, helps secure high quality economic development projects. Since its inception, the High Impact Fund has contributed to:

\$3.6 MM

in high impact awards

9

companies/developments

\$168 MM

in capital investment

1,475

jobs

Unaudited Consolidated Statement of Activities - All Funds, Compiled for the Years Ending 2016 & 2017

	2017	2016
Assets		
Cash & Short Term Investments	\$13,159,502	\$13,609,623
Notes/Advances Receivable Less Reserves	\$10,013,449	\$10,709,005
Other Assets	\$2,435,722	\$3,350,230
Total Assets	\$25,608,673	\$27,668,858
Fixed Assets		
Property & Equipment Net of Accumulated Depreciation	\$11,080,700	\$5,879,482
Total Assets & Fixed Assets	\$36,689,373	\$33,548,340
Liabilities		
Accounts Payable & Other Short Term Liabilities	\$1,768,345	\$2,629,221
Notes Payable	\$6,381,677	\$1,235,420
Total Liabilities	\$8,150,022	\$3,864,641
Net Assets		
Unrestricted	\$10,941,927	\$10,988,094
Temporarily Restricted	\$17,597,424	\$18,695,605
Total Net Assets	\$28,539,351	\$29,683,699
Total Liabilities & Net Assets	\$36,689,373	\$33,548,340

	2017 Operating	2017 Loan Funds/Building	2016 Operating	2016 Loan Funds/Building
Revenues				
Contract Services	\$200,000	\$-	\$237,500	\$-
Membership Dues	\$306,057	\$-	\$298,705	\$-
Loan Service Fees	\$44,020	\$-	\$34,005	\$-
Training/CEO Roundtables Fees	\$95,511	\$-	\$85,788	\$-
Interest (Bank, Investments & Notes)	\$1,003	\$475,725	\$535	\$448,358
Revolving Loan Fund Administration	\$562,958	\$-	\$556,364	\$-
Other	\$218,865	\$198,946	\$160,281	\$923,635
Total Revenue	\$1,428,414	\$674,671	\$1,373,178	\$1,371,993
Expenses				
Personnel Costs	\$944,738	\$-	\$895,725	\$-
Revolving Loan Fund Administration	\$-	\$562,958	\$-	\$556,364
Travel / General Admin / Training / CEO Roundtable	\$92,803	\$-	\$81,830	\$-
Office Equipment	\$3,562	\$-	\$2,225	\$-
Mailing/Printing / Office Supplies	\$10,517	\$12,330	\$11,324	\$955
Accounting / Auditing / Legal	\$24,602	\$14,027	\$30,778	\$16,375
Insurance (Business & General Liability)	\$13,959	\$5,000	\$9,305	\$4,744
Telecommunications / Computer Services	\$26,223	\$1,262	\$25,093	\$942
Rent / Space Maintenance / Utilities	\$91,000	\$28,850	\$90,857	\$28,236
Membership & Business Development	\$175,447	\$-	\$190,374	\$-
Depreciation & Property Taxes	\$31,082	\$69,383	\$26,702	\$68,993
Miscellaneous Expense	\$-	\$47,144	\$-	\$54,328
Reserve Adjustment	\$-	\$1,090,000	\$-	\$827,000
Total Expenses	\$1,413,933	\$1,830,954	\$1,364,213	\$1,557,937
Change In Net Assets	\$14,481	\$(1,156,283)	\$8,965	\$(185,944)

2017 KABA MEMBERSHIP LISTING



351

total number of
KABA investors



35

number of new
investors in 2017



21%

percentage of investors in
manufacturing - the largest
industry concentration



59%

percentage of investors
with less than 49
employees

BANKING

Advia Credit Union
Blackhawk Community
Credit Union
BMO Harris Bank
Capital One
Chase
CIBC Bank

Community State Bank
Educators Credit Union
First American Bank
First Business Bank- Kenosha
Johnson Bank
MB Financial Bank
PNC Bank

Southern Lakes Credit Union
State Bank of the Lakes
The Huntington National Bank
Tri City National Bank
TruStone Financial Federal
Credit Union
US Bank

BUSINESS SERVICES

A.S.G. Staffing, Inc.
Alarm Detection System Inc.
Atlas Employment
Services, Inc.
Badger Press
Photographics, Inc.
Catalyst Exhibits, Inc.
CCB Technology
Chef David's Catered Events
Computer Technologies, Inc.
Converting Solutions, Inc.
Dooley & Associates, LLC
Equity Creative
Hallum Enterprises, Inc.

Halpin Personnel
HR Value Partners
Kenosha Grounds Care
Lee Hecht Harrison
Leeward Business Advisors
Leitch Printing Corporation
Len laquinta's Excellence in
Communications, Inc.
Living As A Leader
Martin Group
Mueller Communications, LLC
NSR Business Solutions
Offsite, LLC
OFS Brands

Over The Top Cuisine
Parallel Employment Group
Platinum Systems, Inc.
Professional Services Group, Inc.
Rick L Perrine Property
Maintenance, LLC
TempsNow Employment &
Placement Services LLC
The Colergét Conference
Center
WHR Group
Winter Services LLC

CONSTRUCTION & RELATED INDUSTRIES

Bane-Nelson, Inc.
Berghammer Construction
Corporation
Bukacek Construction
C.G. Schmidt, Inc.
Cicchini Asphalt, LLC
Concrete Specialties
Company - Kenosha
Dickow-Cyzak Tile Company
DORAL Corporation
Electrical Contractors of
Wisconsin, Inc.

Flannery Fire Protection, Inc.
Hunzinger Construction Co.
Keller, Inc.
Kenosha Plumbing
Kitchen Cubes
Lee Plumbing Mechanical
Contractors, Inc.
Liftpro, LLC
Martin Petersen Co, Inc.
MSI General Corporation
Next Electric Inc.
Point Ready Mix

Postorino Decorating, Inc.
Rasch Construction &
Engineering, Inc.
Riley Construction Co., Inc.
SERVPRO of North Kenosha
County
Thompson Project
Management, LLC
Valiant Electric Inc.
Witico Development Corp.
Yutka Fence

ENGINEERING & ARCHITECTURAL SERVICES

Clark Dietz, Inc.
Deigan & Associates, LLC
DLH Consulting Services, LLC
Garland Alliance, Inc.
Harwood Engineering
Consultants

JSD Professional Services, Inc.
K. Singh & Associates, Inc.
Kueny Architects, LLC
Partners in Design
Architects, Inc.

Pinnacle Engineering Group
raSmith
Ruekert Mielke

GOVERNMENT & EDUCATION

Carthage College
Central High School District
of Westosha
City of Kenosha
Concordia University Wisconsin
Gateway Technical College
Herzing University
Kenosha County
Kenosha Unified School District

St. Joseph Catholic Academy
State of Wisconsin - Dept. of
Workforce Development
The Prairie School
Town of Paris
Town of Somers
Town of Wheatland
University of Wisconsin -
Parkside

Village of Bristol
Village of Paddock Lake
Village of Pleasant Prairie
Village of Salem Lakes
Village of Twin Lakes
Wilmot Union High School
District

HEALTH CARE & RELATED INDUSTRIES

Abbott
Advanced Pain Management
Aurora Health Care
Business Health Care Group
Comprehensive
Orthopaedics, S.C.
Daniel R. Santarelli DDS
Dental Associates, Ltd.,
Kenosha
Doctors of Physical Therapy
Frantal Dental Care

Froedtert South
Frontida, Inc.
Fulmer Dentistry
Hospice Alliance
Jeanne S. Vedder, M.D.
Kenosha Area Family and
Aging Services, Inc.
Kenosha Community Health
Center, Inc.
Kenosha Radiology Center

Kenosha Visiting Nurse
Association & Affiliates
LivingWell Home Medical
Supplies, Inc.
OccuCare
Regulatory Compliance
Associates Inc.
Sports Physical Therapists
VaxPro LLC
Wisconsin Specialty Surgery
Center

INDIVIDUAL

Susan Crane
Jerold Franke
Ronald Frederick
David Geertsens

Carl Holborn
Representative Samantha
Kerkman
County Executive Jim Kreuser

Michael Montemurro
Karl Ostby
Clifton Peterson

2017 KABA MEMBERSHIP LIST

INSURANCE, LEGAL & FINANCIAL SERVICES

A.B. Schmitz Agency, Inc.
 Alia, DuMez & McTernan, S.C.
 Ameriprise Financial Services, Inc.
 Andrea & Orendorff, LLP
 BDO
 CliftonLarsonAllen LLP
 David Insurance Agency
 Davison Law Office, Ltd.
 Deininger & Co., Inc.
 Dewitt, Ross & Stevens, S.C.
 Ehlers and Associates, Inc.
 Financial Service Group, Inc.
 Gateway Mortgage Corp.
 Godfrey & Kahn S.C.
 Godin Geraghty Puntillo Camilli, SC
 Guttormsen & Hartley, LLP
 Jacsten
 Lindner & Marsack, S.C.
 Lueder Financial Group - Northwestern Mutual
 Madrigano, Aiello & Santarelli, LLC
 Michael Best & Friedrich LLP
 Promontory Point Partners, LLC
 Prophet Wealth Management
 RHR Management Consulting, LLC
 Rizzo & Diersen, S.C.

MANUFACTURING

Abatron, Inc.
 ACCO Brands
 Allied Plastics, Inc.
 Ardent Mills LLC
 Ariens Company
 ASYST Technologies LLC
 Badgerland Products, Inc.
 Beckart Environmental, Inc.
 BEI Electronics, LLC
 Bio Fab Technologies, Inc.
 Bone Dry Products
 Bradshaw Medical Inc.
 Colbert Packaging Corp.
 Compass Minerals
 Contact Rubber Corporation
 Cordeck
 Edible Cuts
 Emco Chemical Distributors, Inc.
 Engendren Corporation
 Expanded Technologies Corp.
 Fair Oaks Farms, LLC
 Finishing & Plating Service, Inc.
 Five Star Fabricating, Inc.
 FNA Group Inc.
 GEM Manufacturing Inc.
 Good Foods Group, LLC
 Hanna Cylinders, LLC
 Honeywell/Genesis Cable Products
 Industrial Toolz/Handi-Ramp
 InSinkErator
 International Mold and Production LLC
 IRIS USA, Inc.
 Jockey International, Inc.
 Kenall
 Kenosha Beef Int., Ltd.
 Kenosha Lumber & Manufacturing Co., Inc.
 Kirsan Engineering, Inc.
 L & M Corrugated Container Corp.
 Lakeside Steel & Mfg. Co.
 LMI Packaging Solutions, Inc.
 Medtorque, Inc.
 Mikrotech, LLC
 Monarch Plastics, Inc.
 Mosmatic Corporation
 Niagara Bottling, LLC
 NitroSteel LLC
 Ocean Spray Cranberries, Inc.
 Ocenco, Inc.

NON-PROFIT

Boys & Girls Club of Kenosha
 Goodwill Industries of Southeastern Wisconsin, Inc.
 Journey Church
 Kenosha Achievement Center, Inc.
 Kenosha Area Chamber of Commerce, Inc.

Sam Ruffolo Agency
 Scott Olson, CPA, LLC
 Seymour & Associates, S.C.
 Specialized Accounting Services LLC
 Thomey Financial Services & Eighth Avenue Advisors
 Tirabassi, Felland & Clark, LLC
 Trottier Insurance Group
 Valeri Agency, Inc.
 Vrakas CPAs + Advisors
 Walker & Dunlop
 Wegner CPAs
 Wells Fargo Advisors
 Wipfli LLP

Pacific Sands
 Parker Plastics, Inc.
 POP Manufacturing
 Powerbrace Corporation
 Process Pipe & Valve, Inc.
 Puratos Corporation
 Quest Products Inc.
 R+D Custom Automation
 RCK Foods
 Reflective Concepts, Inc.
 Rehrig Pacific Company
 Rust-Oleum Corporation
 S.C. Johnson & Son
 Sanmina
 Shiloh
 SL Montevideo Technology, Inc.
 Snap-on Incorporated
 ST Specialty Foods
 Standex
 TG3 Electronics, Inc.
 The Metal Shop
 Toolamation, Inc.
 ViskoTeepak
 Vonco Products, LLC

Kenosha Area Convention & Visitors Bureau
 Kenosha Community Foundation

NON-PROFIT, CONT.

Kenosha Country Club
 Kenosha Symphony Orchestra
 Kenosha YMCA
 Lake County Partners
 Lemon Street Gallery & Artspace

REAL ESTATE

Bear Real Estate Group
 Berkshire Hathaway Home Services - Epic Real Estate
 Bridge Development Partners
 CenterPoint Properties
 Clovis Point, LLC
 Darwin Realty & Development Corporation
 First Industrial Realty Trust, Inc.
 Garretto Real Estate LLC
 Gorman & Company
 Janko Group
 Landmark Title Corporation
 Lee & Associates of Illinois LLC
 Legacy Property Management Services, LLC
 NAI MLG Commercial
 Newmark Knight Frank
 Petretti Builders & Developers
 Pitts Brothers & Associates LLC

RETAIL ESTABLISHMENTS

Cast, LLC DBA Sazzy B
 Chiappetta Shoes, Inc.
 Crown Trophy & HTE Promotional
 Festival Foods
 Kenosha Kingfish Baseball Club
 Kentucky Fried Chicken
 LaMacchia Travel
 Mike's Chicken & Donuts
 Mitchell Carpets
 Office Furniture Warehouse
 Paielli's Bakery, Inc.
 Pleasant Prairie Premium Outlets
 Rustic Road Brewing Co.
 Southport Marina

MEDIA, TELECOMMUNICATIONS & UTILITIES

Alliant Energy
 ClearCom Inc
 Kenosha News
 McTernan Wireless/Mobile One
 VTI Security

TRANSPORTATION, DISTRIBUTION & WAREHOUSING

Amazon
 Arvato
 Associated Wholesale Grocers
 ATC Transportation LLC
 C.H. Robinson Worldwide, Inc.
 EJOT Fastening Systems LP
 GFI Midwest LLC
 Glacier State Distribution Services
 Gordon Food Service
 Heartland Produce Co.
 Jelly Belly Candy Company
 JHT Holdings, Inc.
 Kem Krest
 Mann Public Warehouse
 Meijer
 Merchants Moving & Storage Co.
 Midwest Refrigerated Services
 Otto Nelson Moving and Storage

United Way of Kenosha County
 Wisconsin Housing and Economic Development Authority (WHEDA)

Prime Realty Group of Wisconsin, LLC
 RE/MAX Elite, Inc. - Mary Dixon
 Re/Max Newport Elite
 Southshore Title and Closing Services, LLC
 Transwestern
 Venture One Real Estate, LLC
 WISPARK LLC
 Zilber Property Group

Tenuta's Delicatessen & Liquors, Inc.
 The Club at Strawberry Creek
 Total Furniture
 Triangle Appliance, Video & Carpeting Inc.
 Wilmot Mountain, Inc.

WEC Energy Group
 Wisconsin Fuel & Heating

Palmen Auto Group
 Pepsi Beverages Company
 Pfizer
 SuperValu, Inc.
 Uline, Inc.
 Volkswagen Group of America, Inc.
 Yamaha Motor Corp., USA

OUR VISION

*Kenosha County is the premier destination
for new investment and talent in the
Chicago-Milwaukee corridor.*



The Kenosha Area Business Alliance (KABA) is Kenosha County's economic development organization and business association.

A public-private partnership, KABA is focused on making the Kenosha Area a better place to do business, live, and work, through: (1) Economic development initiatives that stimulate private sector investment and job creation; (2) Providing programs, products, and services that improve the competitiveness of Kenosha Area employers and their employees; and (3) Educational initiatives aimed at enhancing student achievement and overall school performance.

5500 Sixth Avenue, Suite 200, Kenosha, WI 53140 | 262.605.1100 | info@kaba.org

www.kaba.org