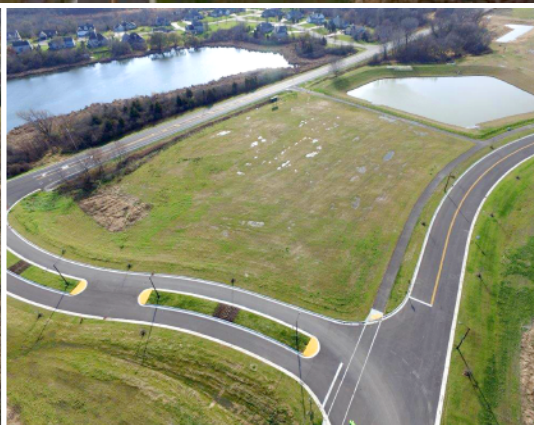
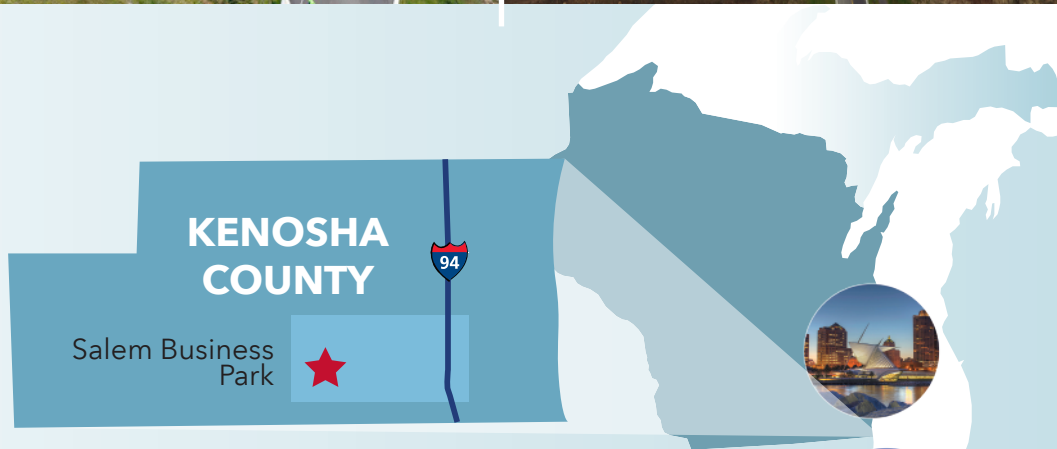


# SALEM BUSINESS PARK



Northwest of Cty  
Highway 83 along  
Cty Highway C in  
the Town of Salem  
Lakes, Kenosha  
County, Wisconsin



For more information, contact:  
**HEATHER WESSLING GROSZ,**  
262.925.3467  
[hwessling@kaba.org](mailto:hwessling@kaba.org)





- > 65 developable acres
- > Flexible subdivision plan
- > TIF-supported development
- > Improved infrastructure: sewer, water, road, curb, gutter and grading
- > Great location: minutes to I-94 and to Illinois border
- > Park accommodates large and small users; manufacturers, assembly, warehouse, distributors
- > Incentives available for high impact developments
- > Competitive land prices
- > Protective/flexible covenants



For more information, contact:  
**HEATHER WESSLING GROSZ,**  
 Vice President of Economic Development  
 Kenosha Area Business Alliance  
**262.925.3467 | [hwessling@kaba.org](mailto:hwessling@kaba.org)**